



Canford Road, Clapham, SW11

4 bedroom house - terraced for sale

£1,199,950

Freehold

Property Details

A fantastic opportunity to extend and stamp your own mark on this attractive period terraced house nestled on a popular residential street between Clapham and Wandsworth Commons. Canford Road is a quiet road which feeds directly off Clapham Common West Side and runs parallel to Northcote Road. The property comprises two reception rooms, a kitchen tucked away at the back of the building, four comfortable double bedrooms, two bathrooms, a cellar and a private West facing garden. Canford Road has the beautiful, leafy expanse of Clapham Common located at the end of the road and it is a ten-minute stroll to Clapham South tube station (Northern Line) and a similar distance to Clapham Junction station (overground). Purchasers will have the best of both worlds: a peaceful, tree-lined street and easy access to vibrant Northcote Road and Clapham High Street, coupled with fast connections to the rest of London.

Features

- Four double bedrooms
- Period terrace house
- Development potential
- West-facing private garden
- Over 1600 square feet of internal living space
- Close proximity to Clapham Common
- Within walking distance to the Northern Line and Clapham Junction
- Freehold

Council tax band F EPC rating D (67)



Canford Road, Clapham, SW11

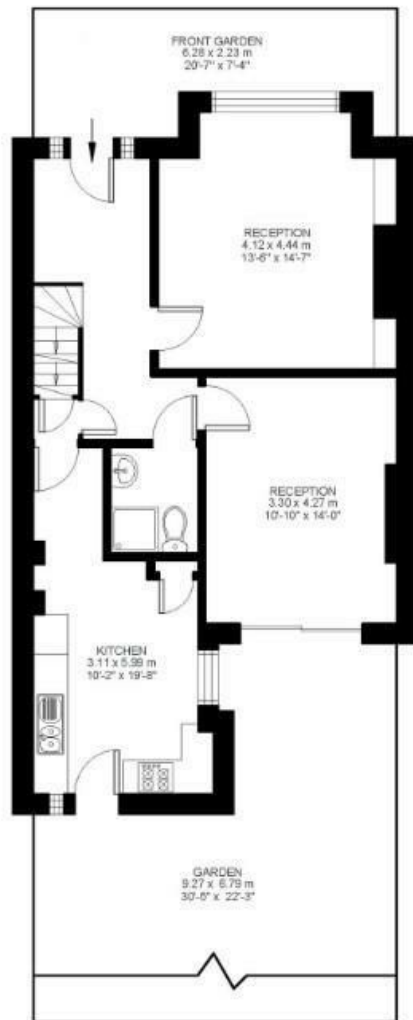


4 Bed house

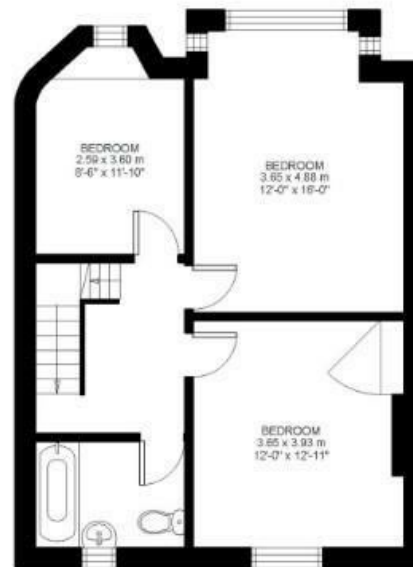
Approx internal area:

1630 sqft 151 sqm

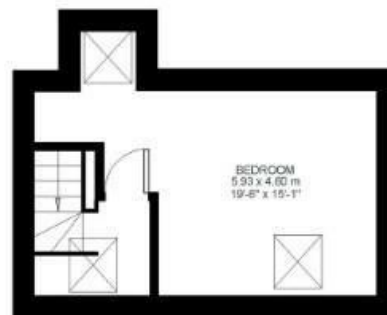
While we do try our very best, floor plans are produced as a guide only and we take no responsibility for the precise accuracy with which any property is represented



Ground Floor



First Floor



Second Floor



Lower Ground Floor



Canford Road, Clapham, SW11

